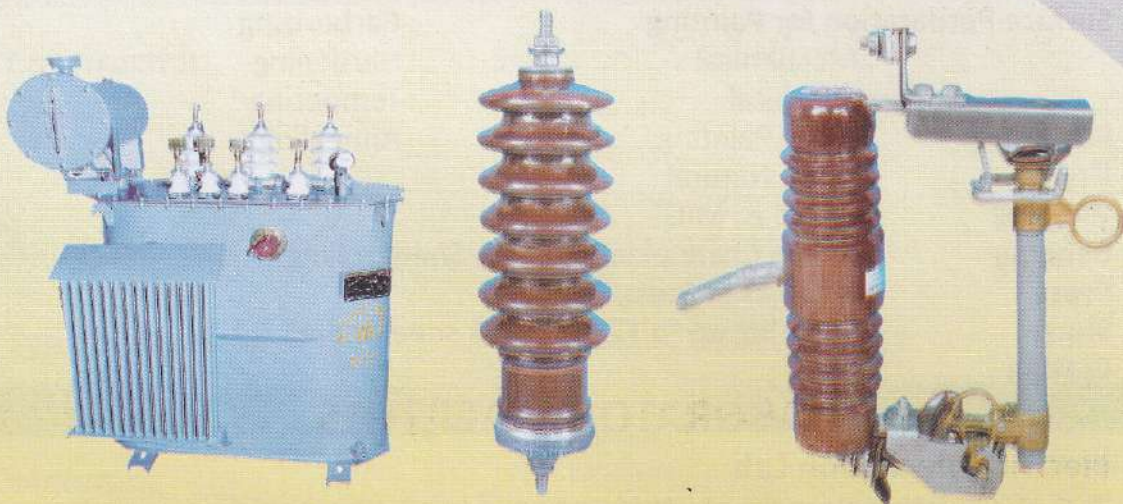


Company Profile & Products



GENERAL ELECTRIC MANUFACTURING COMPANY LIMITED

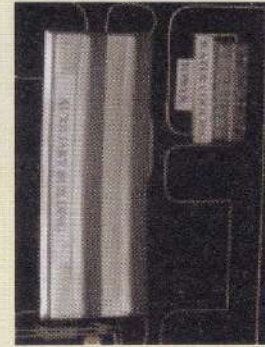
(AN ENTERPRISE OF BANGLADESH STEEL & ENGINEERING CORPORATION)

NORTH PATENGA, CHITTAGONG-4204, BANGLADESH



SALIENT FEATURES

- A. Land**
- | | | |
|----------------------|---|----------|
| a. Factory area | : | 40 acres |
| b. Housing Colony | : | 30 acres |
| c. Further Extension | : | 37 acres |
- B. Main Products**
- Transformer
 - Drop Out Fuse
 - Lightning Arrester
 - Switchgear
 - Power Factor Improvement Plant
- C. Other Products**
- Structural fabrication.
- D. Jobs**
- Turnkey installation
 - Subcontracting



FACTORY FACILITIES

- | | | |
|---|---|---------------------------------|
| Machining | : Turning | Tools, Jigs and Fixtures |
| | : Cylindrical Grinding | : Die making & repairing |
| | : Surface Grinding | : Jig making |
| | : Heavy planing | : Fixture making |
| | : Shaping | |
| | | Heat Treatment |
| Surface Perparation for Painting | | : Carborizing |
| | : Mechanical | : Hardening |
| | : Chemical | : Tempering |
| Painting | : Spray Painting | : Annealing |
| Drying | : Stove Natural | |
| Welding | : Arc, Gas, MIG. | |
| Bending | : Angle, Channel fabrication, Sheet rolling | |
| Press | : All Sorts of Press work | |
| Shear | : Shearing up to 12 min thick sheet metal | |
| Cutting | : Gas | |

LABORATORY FACILITIES

- Electrical Insulation Lab**
- Test of insulating strength of liquid and solid insulating materials
 - Determination of specific resistivity of electrical conductor
 - Measurement of DC resistance (1 to 999900 Ohm)
- Mechanical Lab**
- Measurement of tensile strength, compressive , strength, elongation.
 - Test for elasticity, oil resistance, density and hardness of rubber and rubber products
- Chemical Lab**
- Test for viscosity, acid number, flash point of transformer oil/ lubricating oil
- Test of paints**
- Stoving enamel, synthetic enamel, oil resistance

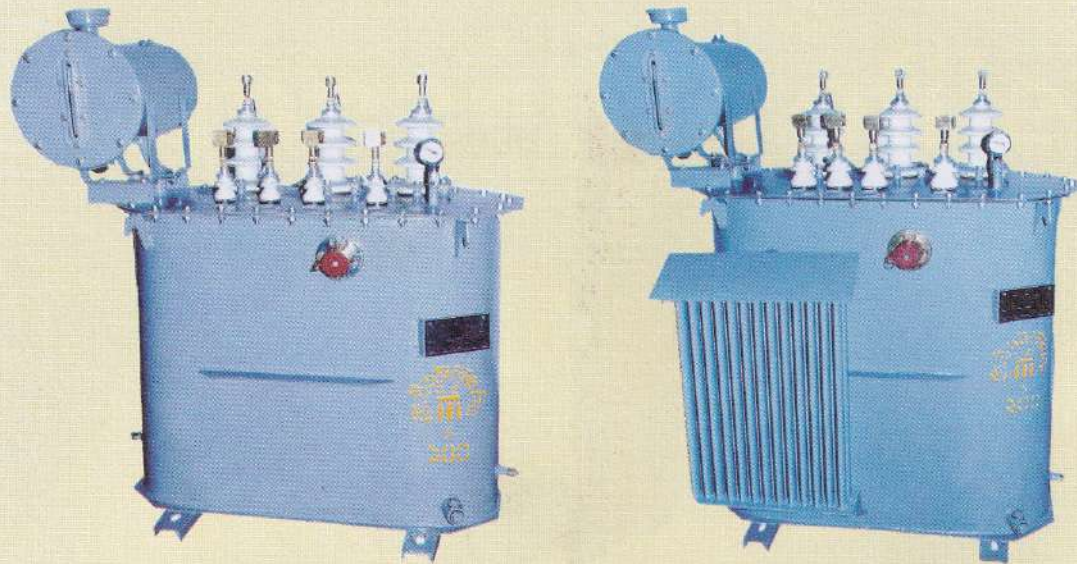
TESTING FACILITIES

Testing Facilities for both Power and Distribution Transformer upto 10 MVA & 33KV systems voltage

TRAINING FACILITIES

Industrial (Training) attachment programmes for Graduate//Diploma Engg. Students and for TTC students.

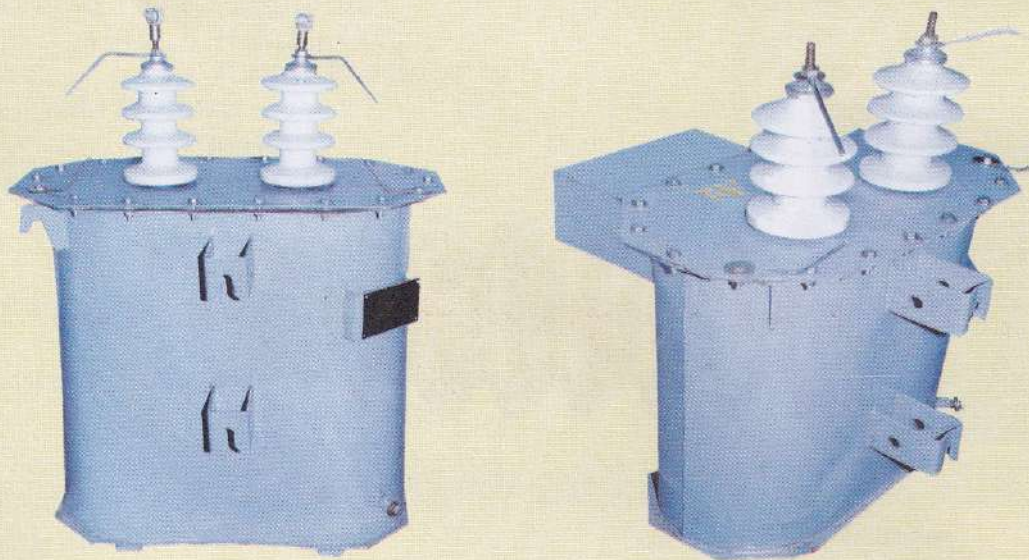
In house Training Programme for GEMCO's employees.



SPECIFICATION OF THREE PHASE DISTRIBUTION TRANSFORMER

1. VOLTAGE RATING:	
a. HV WINDING	11KV
b. LV WINDING	0.415KV
2. NO OF PHAE	THREE
3. VECTOR GROUP	Dyn-11
4. TAP CHANGER	+ 1 X 2.5%, 0, -3 X 2.5%
5. FREQUENCY	50Hz
6. DUTY	CONTINUOUS
7. COOLING SYSTEM	ONAN (OIL NATURAL AIR NATURAL)
8. BASI INSULATION LEVEL 75KV	
9. TEMP RISE (ABOVE AMBIENT):	
a. FOR WINDING	65° c
b. FOR TOP OIL	60° c
10. STANDARD	IEC60076
11. MOUNTING	OUT DOOR/INDOOR NOT OVER 1000M ABOVE SEA LEVEL
POWER RATING	500/300/250/150/100/50KVA

**ALSO IN ACCORDANCE WITH THE DESIRE &
REQUIREMENT OF THE CUSTOMER**



SPECIFICATION OF SIGLE PHASE DISTRIBUTION TRANSFORMER

1. VOLTAGE RATING:	
a. HV WINDING	6.35, 11KV
b. LV WINDING	0.24KV
2. NO OF PHAE	SINGLE
3. VECTOR GROUP	I/I-0
4. FREQUENCY	50Hz
5. DUTY	CONTINUOUS
6. COOLING SYSTEM	ONAN
7. BASI INSULATION LEVEL	95KV
8. TEMP RISE (ABOVE AMBIENT):	
a. FOR WINDING	65° c
b. FOR TOP OIL	60° c
9. STANDARD	IEC 60076
10. MOUNTING	OUT DOOR/INDOOR NOT OVER 1000M ABOVE SEA LEVEL
POWER RATING	25/15/10/5KVA



DESCRIPTION & SPECIFICATION LIGHTNING ARRESTER 11KV

Construction	: Single unit, basically consisting of gapless hermetically sealed in with non-linear characteristics with high energy capacity, all enclosed in porcelain housing.
Application	: Distribution transformer/Line/Cable Protection of heavy duty class.
Type of Arrester	: Metal Oxide (ZnO) Gapless.
Installation	: Outdoor cross arm angle/channel/structure mounted.
Mounting	: Pole Mounted steel bracket
Nominal system Voltage	: 11KV
Maximum system Voltage	: 12KV
System frequency	: 50Hz
Rated Arrester Voltage	: 10.5KV (rms)
Maximum Continuous Operating Voltage	: 8.4KV (rms)
Rated Arrester Current	: 5KA
Power frequency withstand voltage	: 28KV
Standard	: Performance, Design & Testing are in accordance to IEC-99-4.



DESCRIPTION & SPECIFICATION DROP OUT FUSE CUT-OUT 11KV, 100A

Installation	: Outdoor mounted on cross-arm angle/channel structure.
Application	: Protection of Distribution Transformer.
Type	: Open drop out expulsion
Nominal rated Voltage	: 11KV
Maximum system Voltage	: 12KV
Frequency	: 50Hz
Continuous current rating	: 100A
Basic Insulation Level	: 75KV (To earth and between poles)
Power frequency withstand voltage	: 28KV (To earth and between poles)
Fuse link continuous ratings	: As per Customer's requirements.
Rated Interrupting capacity	: 8 KA (RMS)
Standard	: Design, Manufacture, Testing and performance are in accordance with IEC 282-2.



GENERAL ELECTRIC MANUFACTURING COMPANY LIMITED

(AN ENTERPRISE OF BANGLADESH STEEL & ENGINEERING CORPORATION)

NORTH PATENGA, CHITTAGONG-4204, BANGLADESH

Telephone No: 88-031-2501160, 2501161, 2501163, 2501164

Fax No: 88-031-2501162, Web: www.gemco.gov.bd

E-mail : gemcobd@yahoo.com

